

abi Touch: Interactive Finger Touch

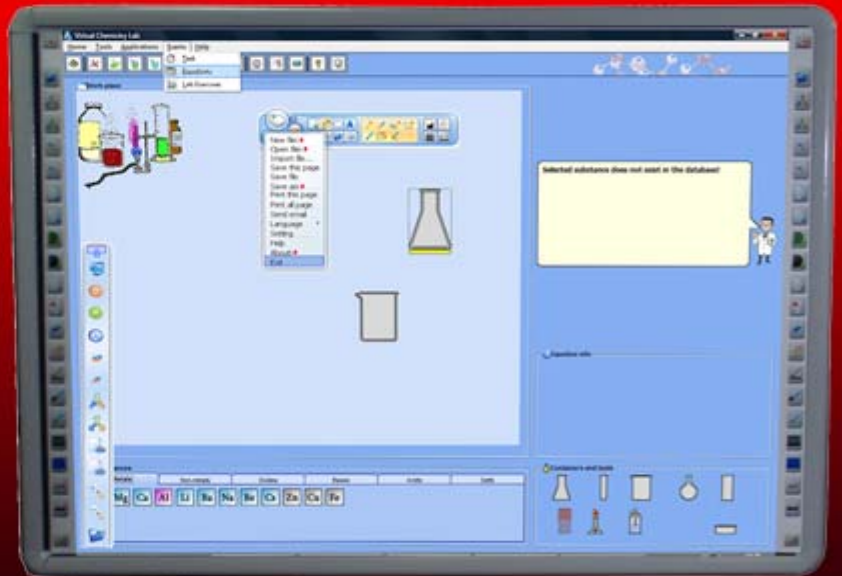
MULTITOUCH INTERACTIVE WHITEBOARD / FINGER TOUCH PORCELAIN

abi TOUCH is a finger touch or pen marker interactive whiteboard that uses a high quality dry erase porcelain (vitreous enamel or ceramicsteel) whiteboard surface. It offers the ultimate solution: the surface cannot be scratched, it is a good projection surface and you don't need to use special electronic pens to use it. You can also use it as a traditional wipe dry marker whiteboard.

The porcelain whiteboard surface is a new, special purpose low glare projection surface, designed for interactive use. It combines the advantages of both whiteboard uses, and is supplied with the **abi** Interactive Board Active-Touch software .

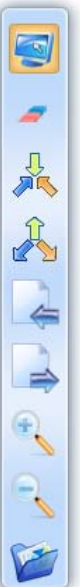
The board now uses Win7 drivers; special drivers are not needed unless using XP. The board works with 32 or 64-bit, and Win7 multitouch software can be used in multitouch mode. The board also offers Gesture Control functions using your fingers: Zoom in/out, move the page left/right or up/down, etc just by touch!!

Board is supplied with standard wall mount; mobile stand and motorized wall mounts optional.



Board:

- Surface: Low Glare Ceramicsteel Porcelain Whiteboard
- Connection: Standard USB 2.0 Connection; Win7 plug-n-play (uses Win7 driver)
- Multitouch: Works in multitouch with Win 7 multitouch activated programs
- Gesture: Page scroll, zoom, rotate, etc functions with finger touch
- Accuracy/Object Size: <2mm accuracy; size minimum 3.0mm, recommended size 5.0mm
- Compatibility: Win 7 (plug-n-play); XP, Mac, Linux
- Touch Life: Minimum 60,000,000 single point touches
- Resolution/Cursor Speed: 4096 x 4096/ Approx 180 d/s
- Projection Quality: Low glare projection surface for excellent projection results; no hot spot
- Overall Size/Weight: 77" Active 4:3 (1760 x 1300) 20kgs; 94" Active 16:9 (2277x1300) 24.5kg
- Writing Area: 78":1469x1185mm; 95": 2106x1185mm
- Positioning Technology: Infra Red Induction; enables use of finger, stylus or whiteboard marker to operate
- Power: USB power; 5.0V DC; <1W(200mA @ 5V)



Software:

- Compatibility: Active-Touch: Win 7, Vista, XP & 2000
- Customisable: Side Control panel can be customised; functions can be dragged in/out
- Updates: Free upgrades (Active Touch)
- Mouse Functions: Supports click, double click & right click functions
- Compatibility: Microsoft Office; PPT can be edited & saved using software
- Features: Supports writing, editing, boundless layout, zoom, enhancement functions, multimedia (Flash, Movie, Music, Internet), Flash creation using software. Camera, save into various file types including PPT, HTML , PDF, JPG, BMP, GIF, TIF, PNG.



Distributed by: ABI China Ltd. 8F/122-124 Connaught Rd, Central, HONG KONG
Tel: 852.2543 8420 Fax: 852.2544 9359 Email: info@abichina.com www.abichina.com

abi
abichina Ltd