

abi TOUCHM: Interactive Finger Touch

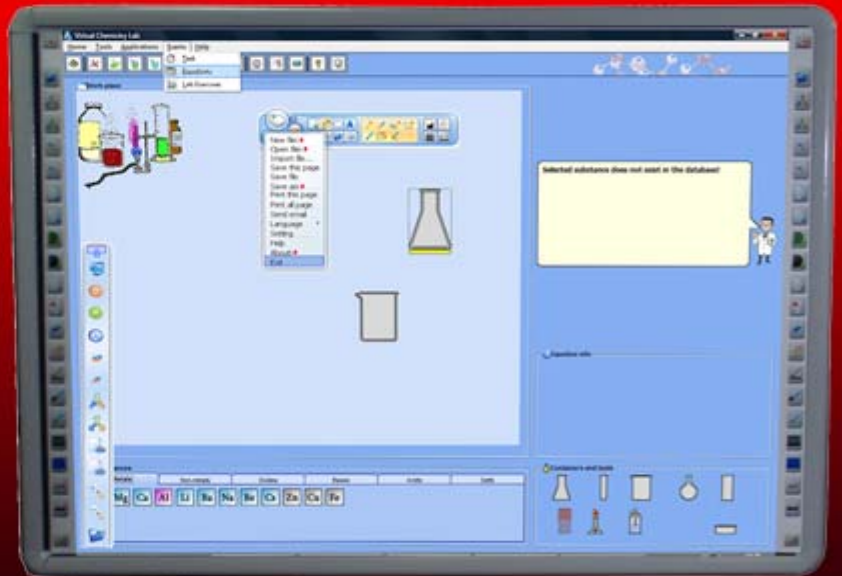
INTERACTIVE MAGNETIC STEEL WHITEBOARD / FINGER TOUCH

abi TOUCHM is a finger touch or pen marker interactive whiteboard that uses a high quality dry erase magnetic whiteboard surface. It offers an improved solution: the surface is hard & scratch resistant, it is a good projection surface and you don't need to use special electronic pens to use it. You can also use it as a traditional wipe dry marker whiteboard.

The whiteboard surface is a new, special purpose low glare projection surface, designed for interactive use. It combines the advantages of both whiteboard uses, and is supplied with the **abi** Interactive Board Active-Touch software .

The software offers unique new Gesture Control functions using your fingers: Zoom in/out; move the page left/right or up/down; choose your command function (pen, cursor or erase) just by the method of touch!!

The board is supplied with standard wall mount; adjustable height wall mount, mobile stand and motorized wall mounts are optional.



abi TOUCHM FEATURES

Board:

- Surface: Low Glare Oven Baked Steel Whiteboard
- Connection: Standard USB 2.0 Connection
- Accuracy/Object Size: <2mm accuracy; size minimum 3.0mm, recommended size 5.0mm
- Resolution: 4096 x 4096
- Touch Life: Minimum 60,000,000 single point touches
- Cursor Speed: Approx 180 d/s
- Projection Quality: Low glare projection surface for excellent projection results; no hot spot
- Overall Size/Weight: 77" Active 4:3 (1760 x 1300) 20kgs; 94" Active 16:9 (2277x1300) 24.5kg
- Writing Area: 77":1469x1185mm; 94": 2106x1185mm
- Positioning Technology: Infra Red Induction; enables use of finger, stylus or whiteboard marker to operate
- Power: USB power; 5.0V DC; <1W(200mA @ 5V)

Software:

- Compatibility: Active-Touch: Windows 2000, XP, Vista & 7; Easiteach: Windows & Mac.
- Gesture Control: Zoom In/Out, Scroll left/right up/down, pen/cursor/erase functions
- Updates: Free upgrades (Active Touch)
- Mouse Functions: Supports click, double click & right click functions
- Compatibility: Microsoft Office
- Features: Supports writing, editing, boundless layout, zoom, enhancement functions, multimedia (Flash, Movie, Music, Internet), Camera, save into various file types including PPT, HTML , PDF, JPG, BMP, GIF, TIF, PNG.



Distributed by: ABI China Ltd. 8F/122-124 Connaught Rd, Central, HONG KONG
Tel: 852.2543 8420 Fax: 852.2544 9359 Email: info@abichina.com www.abichina.com

abi
abichina Ltd